

NOTICE: UNIFORM AND DRESS CODE

ACADEMIC YEAR 2022/23

Dear Students:

The Covid- 19 pandemic and the war between Russia and Ukraine has caused widespread disruption to global shipping. This disruption in the global economy has impacted the supply of the **Mustard and Royal Blue Giorgio Linen Fabric** for The Mico's female uniform for the academic year 2022/23. Due to this unavoidable challenge The Mico has pivoted to amend **ONE** of its Dress Code regulations.

SEE BELOW THE GENERAL DRESS CODE WITH THE AMENDMENT HIGHLIGHTED

Evening/Part Time Students

Uniforms are primarily for undergraduate day students, recognizing that many evening students are coming directly from work and are dressed as appropriate for their workplace. Those not in work attire are to abide by the Handbook's dress code.

Mico-Branded Non-Uniform Attire

Faculty shirts, Department shirts and branded sportswear are not part of the official uniform and may only be worn on designated days or for specific occasions (such as Faculty Thursdays, PE classes, sports events, field trips, Open House)

Personal Protective Equipment and Specialization-specific attire, e.g. for Science, Family and Consumer Science and Industrial Technology, are to be worn in accordance with the guidelines of the academic department and only for the purposes and sessions so designated.

MALE STUDENTS

- dress pants, dark colour, solid/no patterns, not form-fitting
- button front dress shirt or guayabera (bush jacket), white or pastel, long or short sleeve, solid colour or subtle pattern; with undershirt if fabric is thin
- neck tie: business style in coordinating colour
- dark socks with black or dark brown shoes (not "sneakers")

For Official Functions (See Fig. 1)

- solid black dress pants, black belt
- gold, long sleeved, buttoned front dress shirt
- The Mico tie
- optional black blazer (single-breasted, 2-button, notch lapel, welt or flap pocket)
- NOTE this uniform may also be worn on Practicum



Fig. 1 Uniform for Official Functions and Practicum

FEMALE STUDENTS

- ▣ dresses in mustard or royal blue Giorgio Linen
- ▣ black-belted or buttoned style (See Fig. 2 & Appendix A for outline)
- ▣ dress no shorter than knee length
- ▣ short sleeve

(NB-ONCE YOU HAVE THE MUSTARD & BLUE UNIFORM IN THE PHOTOGRAPH CONTINUE TO WEAR THEM)

AMENDMENT

FEMALES ARE ALLOWED TO WEAR BLACK & GOLD UNIFORM TO CLASSES

(See Fig. 1 & Appendix A for outline)

- ▣ black skirt pencil/straight/A-line, no shorter than knee length, black zipper in back or side) or black pants (not form-fitting)
- ▣ gold blouse, short sleeved, collar extends to be tied in a bow at the front
- ▣ optional black jacket (hip length, $\frac{3}{4}$ sleeve, round neckline, collarless, open front, welt pocket or no pocket)
- ▣ **NOTE this uniform may also be worn on Practicum**



Fig. 1 Uniform for Official Functions and Practicum



Fig. 2 L: Belted dress style in mustard fabric. R: Buttoned style (teal fabric no longer used); royal blue colour shown between photos

(FABRIC FOR DRESSES UNAVAILABLE)

Black and Gold fabrics are available for purchase at The Mico Foundation Campus Shop



For additional information please contact the Department of Student Services:
Student.services@themico.edu.jm
1 (876) 764-2748/2836/2796

Appendix A
Uniform Outline/Design

Black Round Neck 3/4 Sleeve

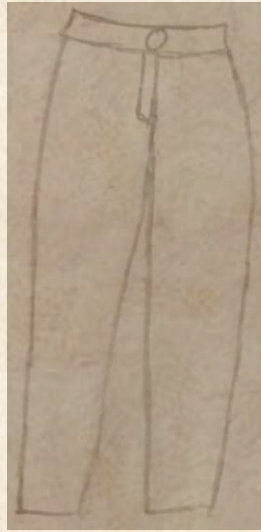


Front of Jacket

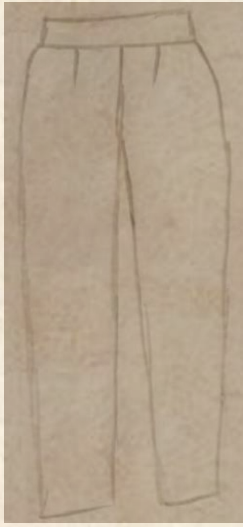


Back of Jacket

Black Straight Foot Zipper Pants with Back Darts

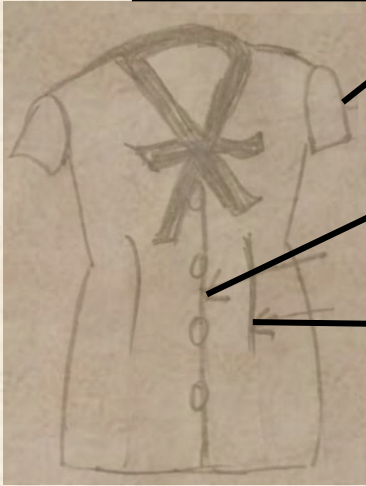


Front

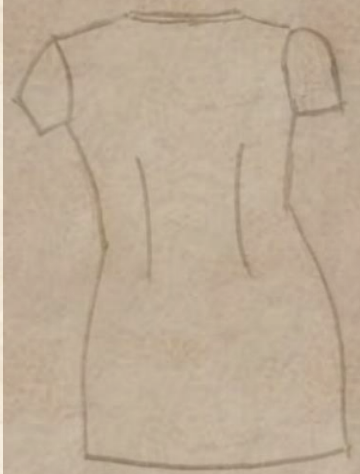


Back

Gold V-neck Shirt Blouse with Tie attached to neckline



Front



Back

Mustard or Royal Blue Round Neck Dress

Black Straight Skirt, zipper back, Lap Split

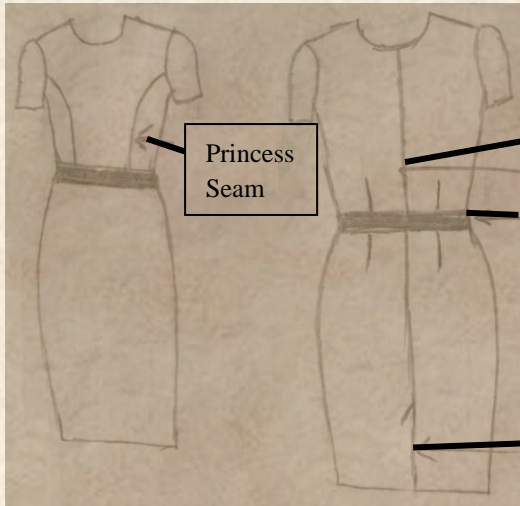


1 1/2 Band

Dart

Zipper

Lap Split



Princess Seam

Zipper Back

1 1/2 Black Band Attached to Dress

Lap Split

Mustard or Royal Blue Round Neck Dress with overlap panel with 1 ½ inset band with button attached

